

Stainless steel toilet partitions are virtually indestructible and retain their gleaming beauty indefinitely. These units combine the strength of #304 stainless steel with a #4 satin finish or textured finish, formed and bonded to a honeycomb core. The face sheets are held rigid and permanently in place by an interlocking strip welded at each corner.

Stainless steel components are impervious to just about any substance. Even scratches caused by deliberate vandalism can be removed by buffing. The elegance of Global Partitions stainless steel components complements any design scheme, either in new construction or for renovations.

FAST TRACK: 48 Hour Shipping
In #4 Satin Finish. Floor Anchored/
Overhead Braced.



OPTIONAL FINISH SELECTION:

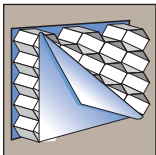


Diamond Finish

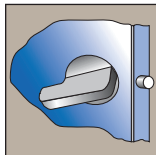


Leather Finish

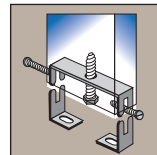
CONSTRUCTION FEATURES:



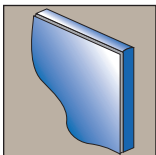
Honeycomb Core
Made of cellular honeycomb. This type of core provides strong construction and sound attenuation.



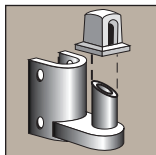
Concealed Latch
With emergency access and ADA lever handle.



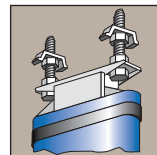
Pilaster Mounting
Pilaster adjustments, with floor-mounted jack-leveling device is standard on floor anchored/overhead braced pilasters.



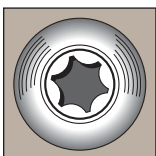
Welded Corner
Corners of panels, pilasters and doors are welded to each other and to the adjacent face sheets.



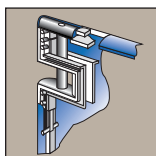
Bottom Door Hinge
Gravity-positioning hinge provides safe, durable and maintenance free support.



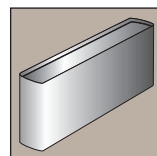
Alternate Pilaster Mounting
This heavy gauge mounting is furnished on all ceiling hung and floor anchored pilasters.



Vandal-Resistant Fasteners
Special driver installs fasteners which virtually eliminates unauthorized removal and ensures easy installation.



Upper Door Bracket
Internal part of the door. A pin goes through door and bracket for three-point bearing and operates in a nylon bushing in upper hinge bracket.



Shoe Construction
One-piece stainless steel, type 304, with #4 satin finish trim shoes are hemmed top and bottom for rigidity and sleek appearance.

OPTIONS:

- Wood Core
- No Sight Hardware
- Continuous Aluminum Brackets
- Continuous Stainless Steel Brackets
- Continuous Powder Coated Brackets
- Ultimate Privacy™ Height Options
- Stainless Steel Stirrup Brackets & Door Hardware